

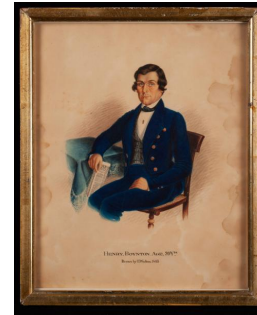
# Basic Report



**Title:** Almira H. Mapes  
**Date:** c. 1841  
**Primary Maker:** Henry Walton  
**Medium:** Ink and watercolor on paper



**Title:** Frances E. Mapes  
**Date:** c. 1841  
**Primary Maker:** Henry Walton  
**Medium:** Watercolor and ink on heavy wove paper



**Title:** Henry Boynton  
**Date:** 1845  
**Primary Maker:** Henry Walton  
**Medium:** Watercolor and ink on wove paper



**Title:** Ann Van Lew  
**Date:** 1843  
**Primary Maker:** Henry Walton  
**Medium:** Watercolor with glazed highlights and ink on heavy wove paper



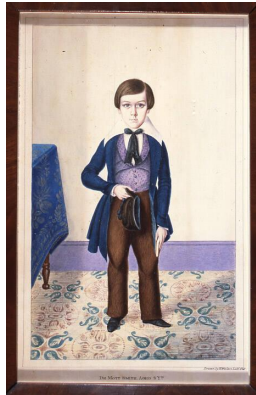
**Title:** Probably Joseph Curtiss Burritt  
**Date:** 1840  
**Primary Maker:** Henry Walton  
**Medium:** Watercolor on ivory



**Title:** Hetty Maria Lord Burritt  
**Date:** 1840  
**Primary Maker:** Henry Walton  
**Medium:** Watercolor with glazed highlights on ivory



**Title:** Herman Halsey  
**Date:** c. 1836  
**Primary Maker:** Henry Walton  
**Medium:** Watercolor and ink on heavy wove paper



**Title:** De Mott Smith  
**Date:** 1841  
**Primary Maker:** Henry Walton  
**Medium:** Watercolor, ink and pencil on heavy wove paper



**Title:** Nancy Couch  
**Date:** 1836  
**Primary Maker:** Henry Walton  
**Medium:** Watercolor and ink on heavy wove paper



**Title:** Emeline Boynton  
**Date:** 1845  
**Primary Maker:** Henry Walton  
**Medium:** Watercolor and ink on heavy wove paper



**Title:** Harriett Elizabeth Boynton  
**Date:** 1845  
**Primary Maker:** Henry Walton  
**Medium:** Watercolor and ink on wove paper



**Title:** Robert Culver  
**Date:** 1839  
**Primary Maker:** Henry Walton  
**Medium:** Watercolor