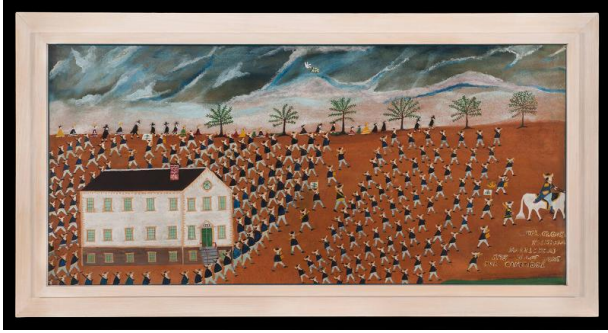


Basic Detail Report



Colonel Glover's Fishermen Leaving Marblehead for Cambridge, 1775

Date

1922-1928

Primary Maker

John Orne Johnson Frost

Medium

Oil on wallboard

Description

A company of men in blue uniforms marching behind a man on a white horse, past a white house with many windows, on sandy ground. Sparse trees, un-uniformed people, and a roiling sky or sea in the background.

Dimensions

Framed: 27 3/16 × 53 1/2 × 1 1/4 in. (69.1 × 135.9 × 3.2 cm) Sight: 22 7/8 × 49 1/8 in. (58.1 × 124.8 cm)