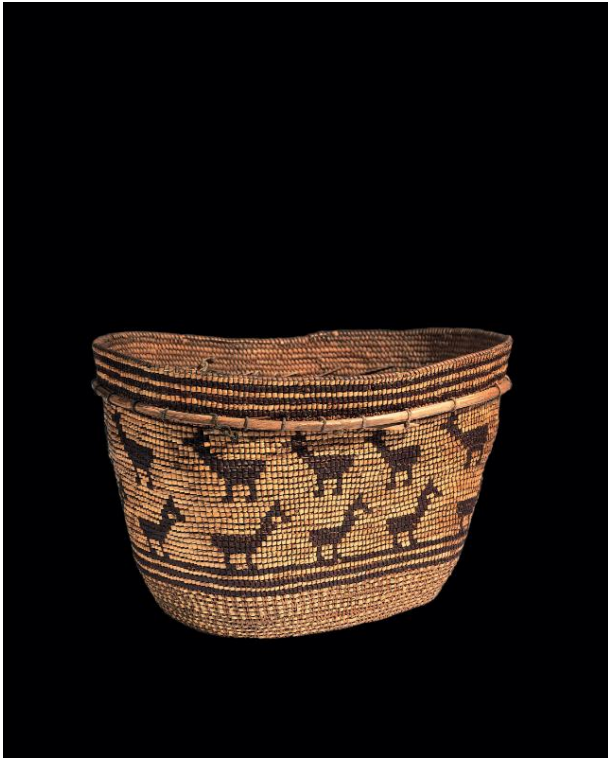


Basic Detail Report



Basket

Date

c. 1880-1890

Primary Maker

Chilcotin

Medium

Spruce root, cedar bark, cedar root, bear grass, cherry bark, willow, cotton

Description

Burden baskets made from coiled spruce roots are a distinctive feature of the traditional culture of the Chilcotin, an Athabaskan-speaking people living in south-central British Columbia. These burden baskets were also artistic creations, combining technical skill, attention to detail, and compelling imagery. Decoration is with red

cherry bark and yellow-white grass, applied through imbrication to the outer surface of the sides. A second decorative technique interweaving of grass with the spruce root stitching can be seen on the lower sides. A row of long-necked birds marches in orderly fashion along the bottom of this basket. Above them, a row of animals do the same but in the opposite direction. The willow rod below the rim adds strength and support to the basket.

Dimensions

Overall: 8 3/4 × 13 1/4 × 10 1/2 in. (22.2 × 33.7 × 26.7 cm)