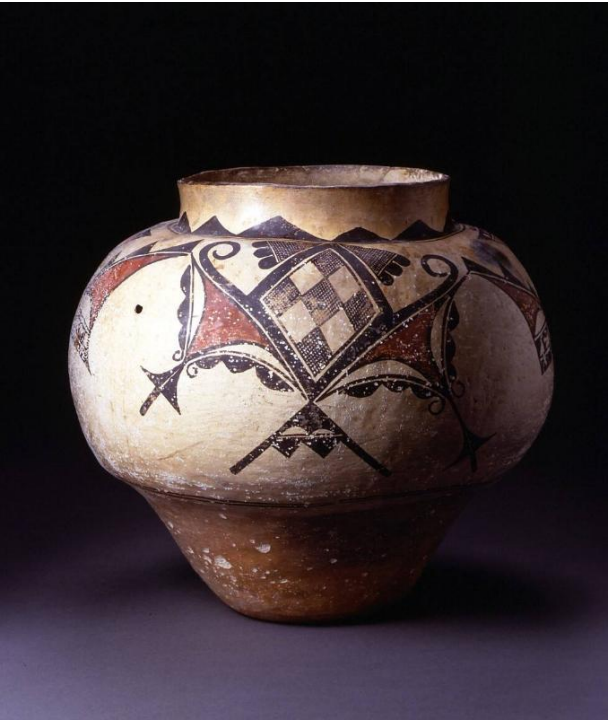


Basic Detail Report



ceramic

Dimensions

Overall: 12 × 13 in. (30.5 × 33 cm)

Jar

Date

1800-1850

Primary Maker

Acoma/Laguna (Ako)

Medium

Clay, organic pigment

Description

The mushroom shape of this large storage jar results from the use of a deep dish form used to hold and shape the base of the pot. Acomita Polycrome was made in various shapes between 1770 and 1880. Typical are the flowing geometric decorations seen on this jar, as are the triangles decorating the neck and red-slipped underbody.