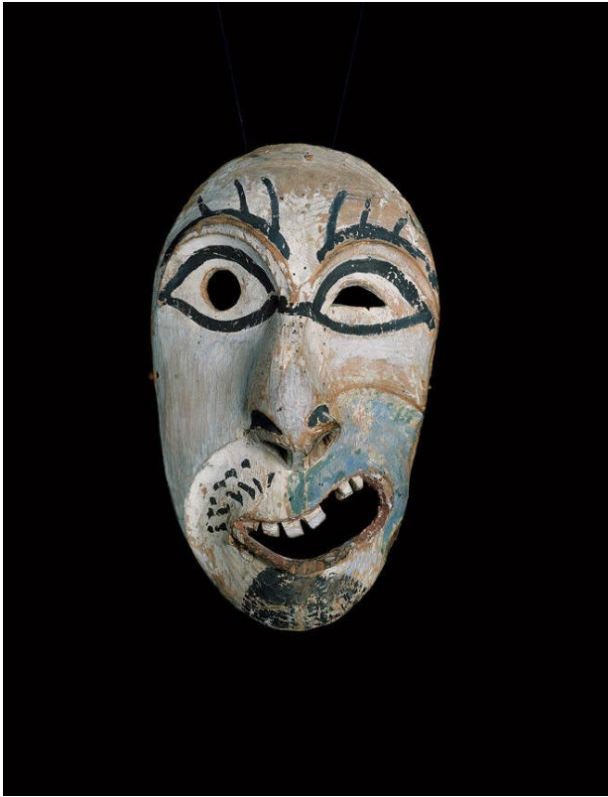


Basic Detail Report



Mask

Date

c. 1910

Primary Maker

Ingalik

Medium

Cedar wood, blue, white, green, red, and black pigments

Description

This Ingalik Athapaskan mask has an unmistakable comic expression. The exaggerated eyelashes and winking eyes as well as the toothy, lopsided grin humorously caricature the Ingalik people. Such masks appeared as comic relief and entertainment during important ceremonies where serious dances took place. These comical masks share the same facial expressions as Tunghat masks from Eskimo

traditions and are likely derived from that source.

Dimensions

Overall: 8 1/4 × 5 × 2 5/8 in. (21 × 12.7 × 6.7 cm)