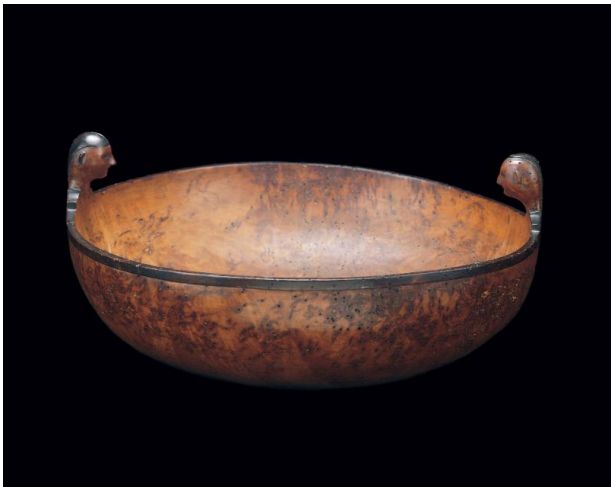


# Basic Detail Report

---



## Bowl

### Date

c. 1780

### Medium

Maple burl, pigment

### Description

Two spirit effigies preside over this feast bowl. Their distinct features distinguish them as a male and a female. Both have black hair and eyes, slender necks, and small

squared shoulders. The male wears a warrior's roached haircut and has a rounder face than the female. Images of women appear on Great Lakes love dolls and medicine dolls but carved images of women on other Woodlands art are rare. An edged rim highlighted in black pigment encircles and connects the two effigies.

### Dimensions

Overall: 7 3/4 × 16 1/2 × 15 in. (19.7 × 41.9 × 38.1 cm)