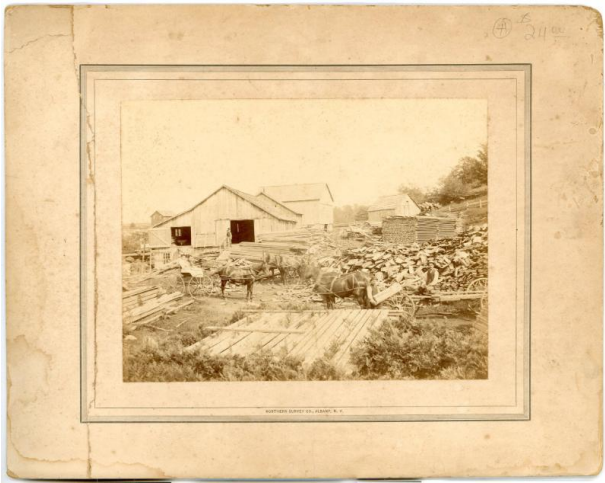


Basic Detail Report



Dimensions

Sight: 6 1/2 × 8 1/2 in. (16.5 × 21.6 cm)

Saw Mill

Date

c. 1890-1900

Medium

Photographic paper Cardboard Mount

Description

A three horse-drawn cart can be seen in the midst of the stacks of boards and piles of shingles. A large barn and three other buildings are central to the image.