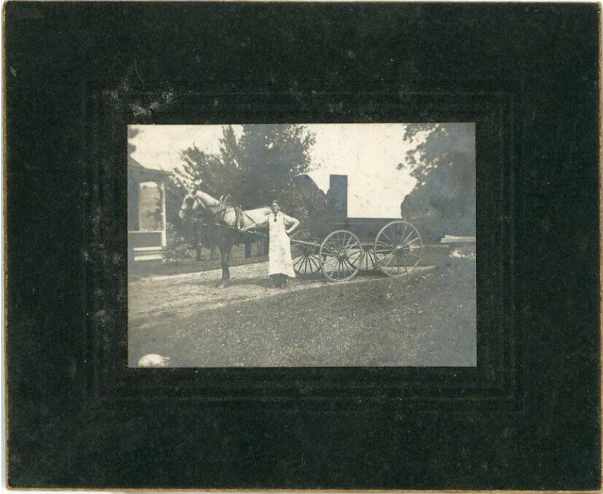


Basic Detail Report



Man with Horse & Wagon

Date

nd.

Medium

Photographic paper, cardboard mount

Description

Image of a man in a long, white apron standing with a horse and covered wagon. There is a building in front of them.

Dimensions

Sight: 2 1/4 × 3 1/4 in. (5.7 × 8.3 cm) Matted: 4 1/2 × 5 1/2 in. (11.4 × 14 cm)