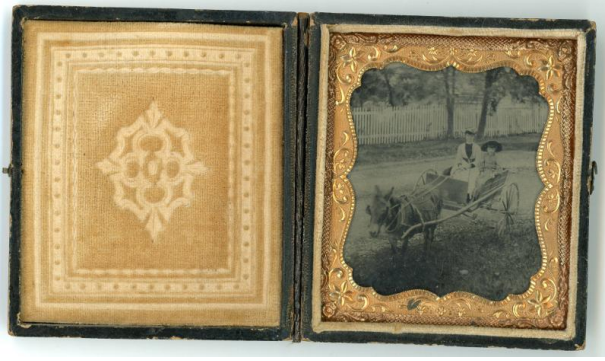


# Basic Detail Report

---



## Woman and Girl in a Donkey Cart

### Date

c. 1860-1865

### Medium

Leather, Case Exterior, Wood, Case, Metal, Clasp, Velvet, Interior, Brass, Mat & Preserver, Glass, Interior, Collodion on glass, Silver Image

### Description

Ambrotype image of a woman and girl, both wearing dresses and hats, sitting in a cart hitched to a donkey. A picket fence and trees can be seen in the background. This is a cased image with a faded yellow velvet cushion and an ornate brass mat.

### Dimensions

Closed Dimensions: 3 5/8 × 3 × 5/8 in. (9.2 × 7.6 × 1.6 cm) Open Dimensions: 3 5/8 × 6 1/4 × 3/8 in. (9.2 × 15.9 × 1 cm)