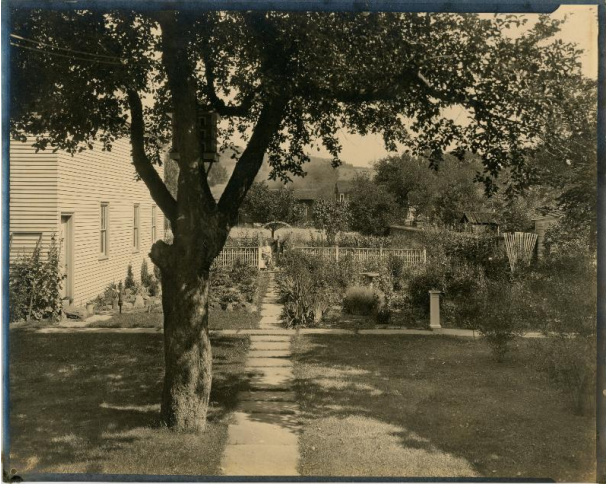


# Basic Detail Report

---



Overall: 8 × 10 in. (20.3 × 25.4 cm)

## House and Garden

### Medium

Photographic paper

### Description

Image of a house with a large garden next to it. There is a path down the middle of the garden that a man and women pose at the end of. There is also a tree with a large bird house in it right in front of the camera.

### Dimensions