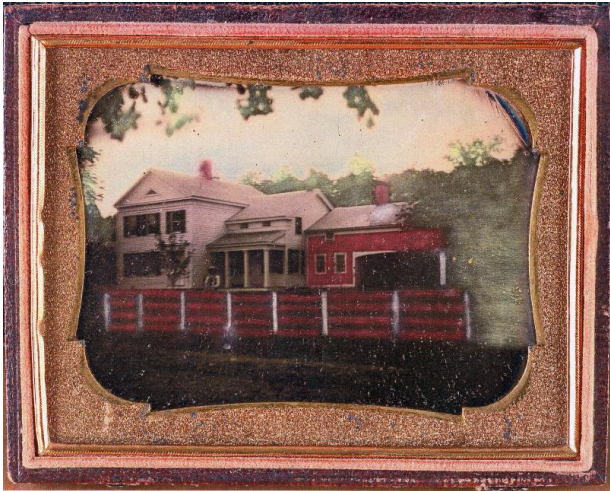


Basic Detail Report



1850s Farm House

Date

c. 1850-1859

Medium

Leather, Case exterior Wood, Case Glass Gold, Mat Silver-plated copper color pigment, Hand colored

Description

Quarter-plate, hand-colored daguerreotype of a farmhouse. Image is of a white, greek-revival "upright -

and-wing" style farmhouse, as evidenced by the gable roof with triangular pediment and a wide frieze band. The wing to the farmhouse is probably contemporary to the main part of the house. Off the front of the wing is an open-air porch. The first floor of the wing, may have contained the dining area or served as a home office. The third portion of the house (painted red), served as a kitchen (on the left side) and woodshed (open part on the right side). The woodshed/open area may also have served as cover for a wagon. The second floor, above the kitchen, may have served as sleeping quarters for hired help. This portion of the home was possibly an early addition to the home. In front of the house is a red and white hand-colored American post and rail fence. A person sits in front of the porch - perhaps on steps (?). At the time of the photograph, the house may have been no more than twenty years old. The daguerreotype is housed in a leather, embossed case with a gold mat and filament. On the outside of the case (front and back) is an embossed design including a tall urn filled with fruit and flowers. Scroll detail surrounds the central design.

Dimensions

Closed Dimensions: 4 3/4 x 3 3/4 in. (12.1 x 9.5 cm)