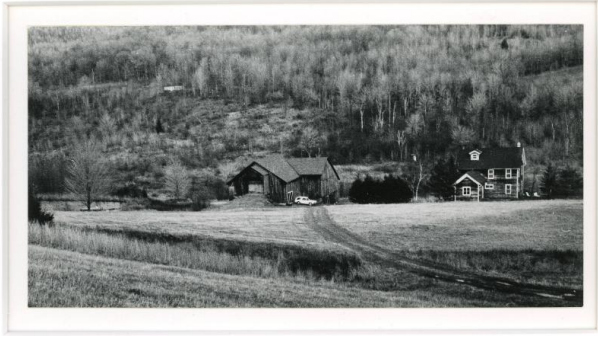


Basic Detail Report



House and Barn; New Kingston

Date

1980

Medium

Black & White Silver Gelatin Photographs

Description

Image of a large house and barn with a long driveway through a field leading to it. The hillside behind the house and barn is covered in trees. Thomson Hollow.

Dimensions

Sight: 3 5/16 × 6 5/8 in. (8.4 × 16.8 cm) Matted: 10 × 8 in. (25.4 × 20.3 cm)