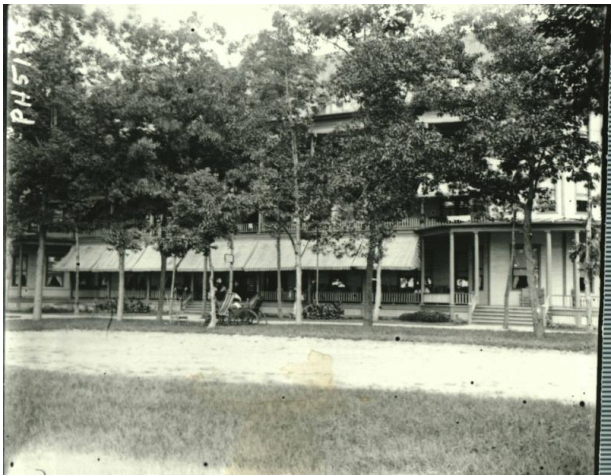


# Basic Detail Report

---



## Dimensions

Sight: 4 × 5 in. (10.2 × 12.7 cm)

## Unidentified Building

### Date

c. 1900

### Medium

Glass plate, Collodion Emulsion Photographic Paper (copy prints)

### Description

Large building with rockers on porch and a striped awning. Could be a hotel.