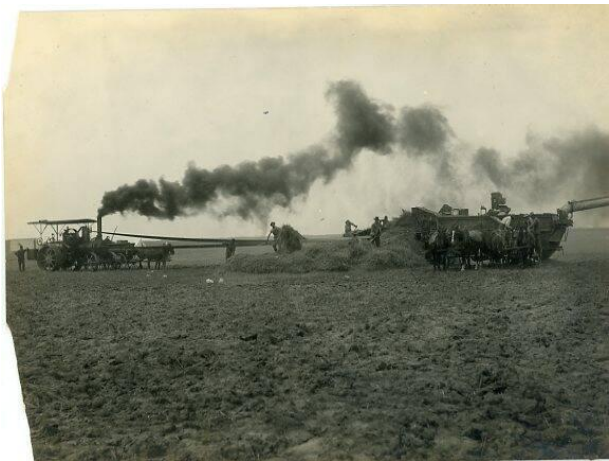


Basic Detail Report



Threshing Team

Date

c. 1880-1900

Medium

Photographic paper

Description

A threshing team works using early agricultural equipment including a steam traction engine and threshing machine. Three teams of horses are present. In

this photograph the threshing team consists of nine men, nost of whom are pitching grain into the thresher.

Dimensions

Sight: 6 × 8 in. (15.2 × 20.3 cm)