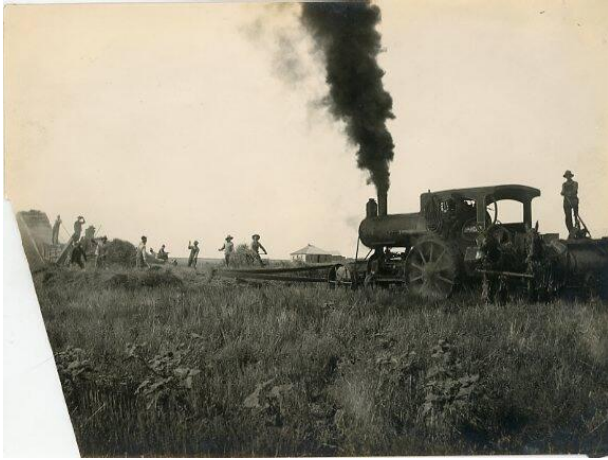


Basic Detail Report



Threshing team with Avery Steam Traction Engine

Date

c. 1900-1915

Medium

Photographic paper

Description

A threshing team is set up in a field with an Avery

Traction Engine, a threshing machine and a team of horses. At least eleven men are at work, most of them pitching grain into the thresher. This model may be the 1912, Avery 40 H.P. traction engine.

Dimensions

Sight: 6 × 8 in. (15.2 × 20.3 cm)