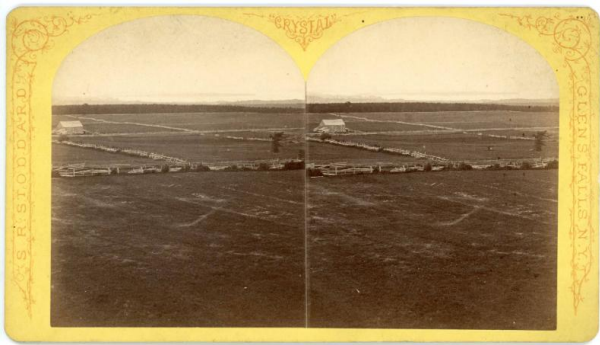


Basic Detail Report



Lake Champlain & Port Kent From Lake House View

Date
c. 1870-1900

Medium
photographic paper mounted on heavy cardboard

Description
View of fields, barn, and fences with hills and lake in the background

Dimensions
Sight: 3 11/16 × 3 in. (9.3 × 7.6 cm) Matted: 8 7/8 × 7 in. (22.5 × 17.8 cm)