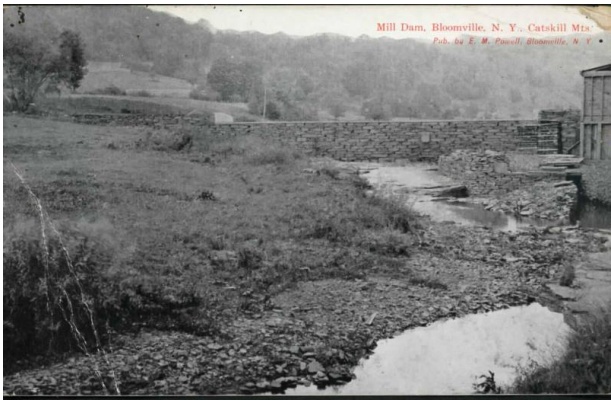


# Basic Detail Report

---



## Mill Dam, Bloomville NY

**Date**

c. 1922-1954

**Medium**

Photographic print on heavy paper

**Description**

Image of a mill dam made of stacked stone shown running

across a stream. Mill to image right, fields and trees to image left.

**Dimensions**

Sight: 3 1/2 × 5 1/2 in. (8.9 × 14 cm)