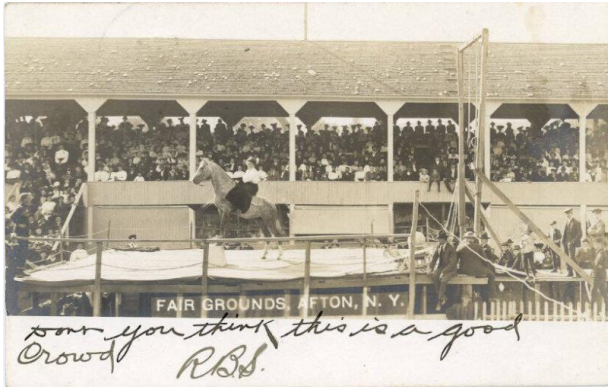


# Basic Detail Report

---



## Afton Fair 2

### Date

c. 1906

### Medium

Photographic Print on heavy paper

### Description

A large audience consisting of men, women and children sit

in the grandstand at a fair and watches the performer on stage. A woman dressed in a white shirt and a dark skirt sits atop a horse. The horse has its left front hoof on top of a large block. To the right of her, a group of men dressed in suits are sitting at the edge of the stage and watching the performance.

### Dimensions

Sight: 3 1/2 × 5 1/2 in. (8.9 × 14 cm)