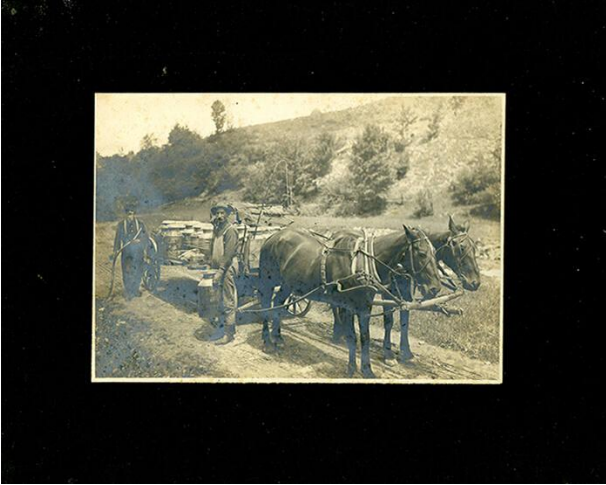


# Basic Detail Report

---



## Horse Drawn Milk Wagon

### Date

1904

### Medium

Photographic print Cardboard mount

### Description

Image of two men standing next to a two horse drawn wagon loaded with milk cans on a dirt road. A wooden fences and part of a rock wall can be seen in the

background. One man holds a milk can with both hands, the other stands near the back of the wagon holding a scythe.

### Dimensions

Sight: 4 1/2 × 6 1/2 in. (11.4 × 16.5 cm) Overall: 8 × 10 in. (20.3 × 25.4 cm)