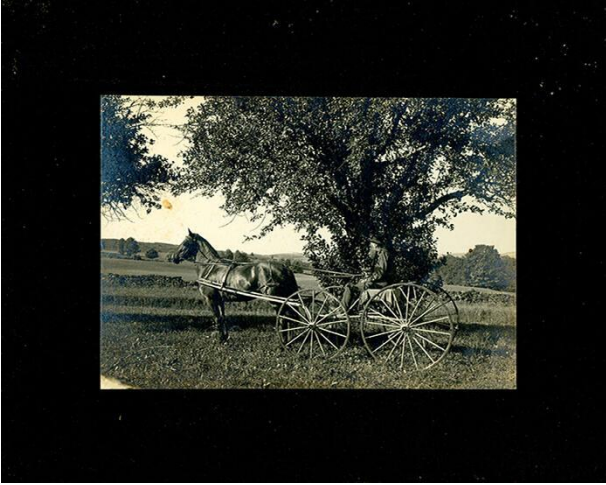


Basic Detail Report



Horse Drawn Cart

Date

1904

Medium

Photographic print Cardboard mount

Description

A man sits in the driver seat of a one horse cart next to a tree.

Dimensions

Sight: 4 1/2 × 6 1/2 in. (11.4 × 16.5 cm) Overall: 8 × 10 in. (20.3 × 25.4 cm)