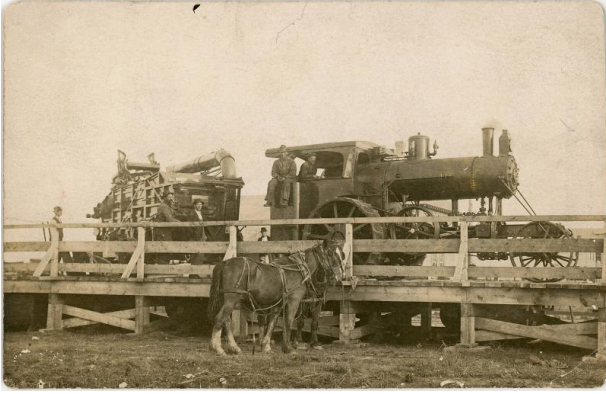


Basic Detail Report



Steam Engine and Thresher

Medium

photographic print, heavy paper, Postcard

Description

Six men gather around a steam engine and a thresher. Three of them are dressed to work and the other three are not. There are two horses tied up to a bridge.

Dimensions

Overall: $3 \frac{5}{16} \times 5 \frac{3}{16}$ in. (8.4 × 13.2 cm)